

SERVICE MANUAL



4-Color Personal Inkjet Printer

EPSON Stylus COLOR 460



EPSON®

SEIJ99008

Notice:

- All rights reserved. No part of this manual may be reproduced, stored in a retrieval system, or transmitted in any form or by any means, electronic, mechanical, photocopying, recording, or otherwise, without the prior written permission of SEIKO EPSON CORPORATION.
- The contents of this manual are subject to change without notice.
- All effort have been made to ensure the accuracy of the contents of this manual. However, should any errors be detected, SEIKO EPSON would greatly appreciate being informed of them.
- The above notwithstanding SEIKO EPSON CORPORATION can assume no responsibility for any errors in this manual or the consequences thereof.

EPSON is a registered trademark of SEIKO EPSON CORPORATION.

General Notice: Other product names used herein are for identification purpose only and may be trademarks or registered trademarks of their respective owners. EPSON disclaims any and all rights in those marks.

Copyright © 1999 SEIKO EPSON CORPORATION. Printed in Japan.

PRECAUTIONS

There are cautionary notes throughout the text to help you avoid personal injury or equipment damage.



Signals a precaution which, if ignored, could result in serious or fatal personal injury. Great caution should be exercised in performing procedures preceded by a WARNING heading.



Signals a precaution which, if ignored, could result in damage to equipment.

Always observe the measures listed below when performing repair or maintenance procedures.

WARNING

1. Always disconnect the product from both the power source and host computer before performing any maintenance or repair procedure.
2. No work should be performed on the unit by persons unfamiliar with basic safety measures dictated for all electronics technicians in their line of work.
3. In performing testing described in this manual, do not connect the unit to a power source until instructed to do so. When the power supply cable must be connected, use extreme caution in working on the power supply and other electronic components.

CAUTION

1. Repairs on EPSON products should be performed only by an EPSON-certified repair technician.
2. Make certain that the source voltage is the same as the rated voltage listed on the serial number/rating plate. If the EPSON product has a primary AC rating different from the available power source, do not connect it to the power source.
3. Always verify that the EPSON product has been disconnected from the power source before removing or replacing printed circuit boards and/or individual chips.
4. To protect sensitive microprocessors and circuitry, use static discharge equipment, such as anti-static wrist straps, when accessing internal components.
5. Replace malfunctioning components only with those components recommended by the manufacturer; introduction of second-source ICs or other nonapproved components may damage the product and void any applicable EPSON warranty.

Revision Status

Revision	Issued Date	Description
A	September 9, 1999	First release.

Table of Contents

FEATURES	7
ADJUSTMENT	7
Adjustment Program.....	7
Entering the Adjustment program.....	8

CHAPTER

1

ADDENDUM

1.1 FEATURES

The Stylus COLOR 460 is a refreshed version of the Stylus COLOR 440 and the product specification is exactly the same only except the following.

- Model ID and BDC-ID

MDL:Stylus [SP] COLOR [SP] 460;

NOTE: [SP] means SPACE.

Therefore, the rest of contents of the service manual is the same as of EPSON Stylus COLOR 440/640/740 service manual.

1.2 ADJUSTMENT

Since the printer mechanism and the control circuitries are the same for both Stylus COLOR 440 and 460, all adjustments that required when the printer is disassembled or a certain component is replaced after repair, are remains the same. Refer to Stylus COLOR 440/640/740 service manual for the details.

This section describes specific procedures for making the adjustment on Stylus COLOR 460 using the exclusive adjustment program.

1.2.1 Adjustment Program

The adjustment program for use with Stylus COLOR 460 is as below.

- SC404446.EXE
(This program supports Stylus COLOR 460 and 440/400.)

1.2.2 Entering the Adjustment program

To perform any adjustment item in the program, you need to specify which model is the target for adjustment first. Read the following instructions and these steps will guide you through the program menu.

1. Execute the program.
2. The first menu for specifying the model to be adjusted appears.

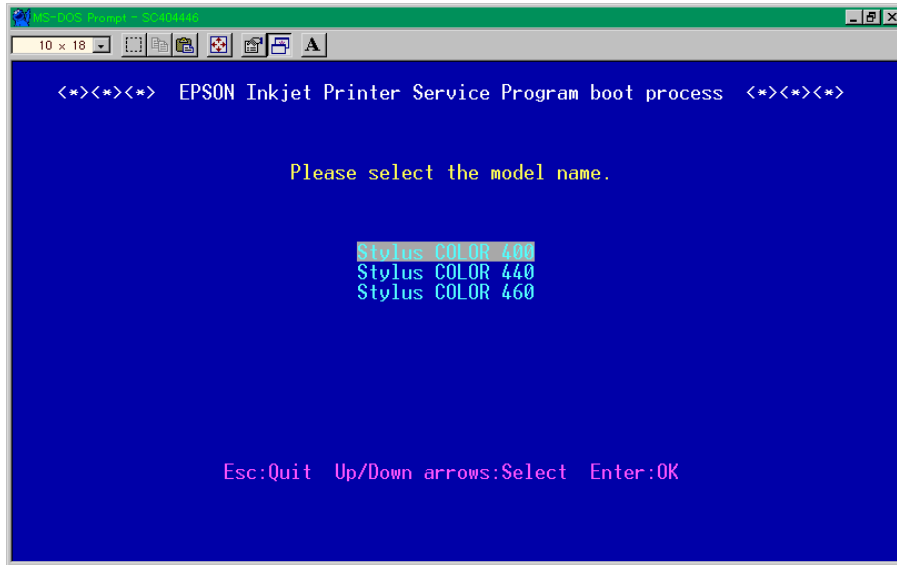


Figure 1-1. Initial Menu (1)

3. Select the model to be adjusted using the program. By pressing ENTER key, the model name will be written in the EEPROM on the printer.

4. In the next menu, choose the destination market which specifies the market specific setting information in the EEPROM. This setting specifies the dot type used in the economy print mode as follows.

Destination	Dot Type (EEPROM Address : 6EH)
Standard (for all the market except Pacific area)	00H (Default) (Normal x2 dot)
Pacific (for ESP, EHK, ETT and their market)	01H (Normal x1 dot)

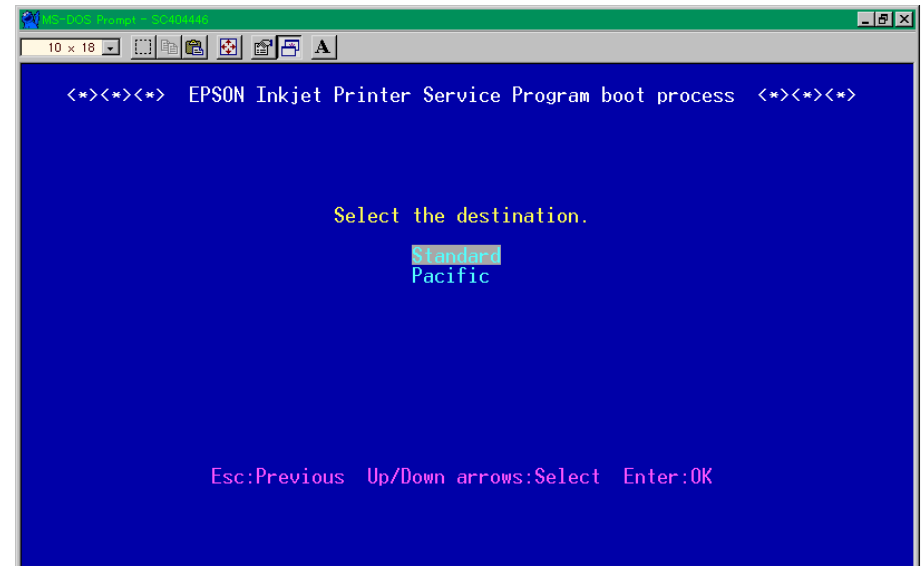


Figure 1-2. Initial Menu (2)

5. When completing the setting in the EEPROM, the following menu screen appears.

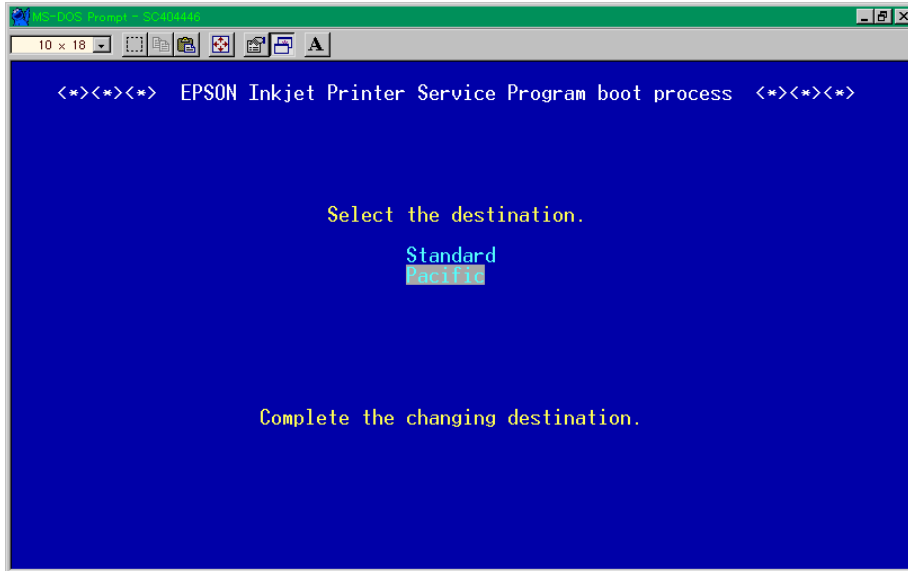


Figure 1-3. Initial Menu (3)

6. In the next menu, you can verify the model name stored in the EEPROM or start the adjustment program main routine. To verify the model name has been selected and stored in the EEPROM, choose "Get" option in the menu.

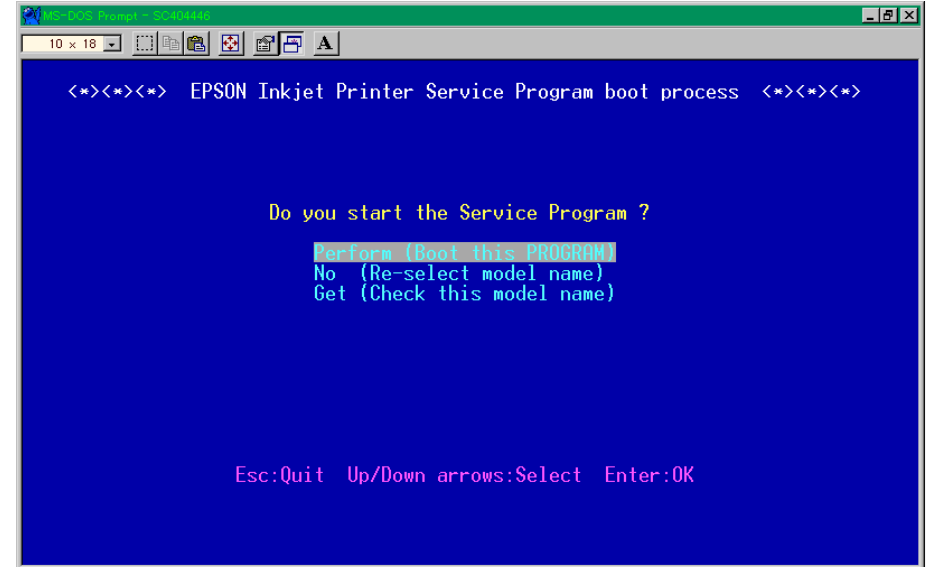


Figure 1-4. Initial Menu (4)

- When you choose "Get" option, the program will read the model name stored in the EEPROM and display it as shown below.

If the model name is not correct, press ESC key to return to the previous menu and choose "No" to specify the correct model name again.

If the model name displayed on the screen is correct (as "Stylus COLOR 460"), press ESC key to return to the previous menu (See Figure 1-4.), and choose "Perform" to start the adjustment program main routine. To make actual adjustment, follow the menu of program and refer to the Stylus COLOR 440 Service Manual for the details.

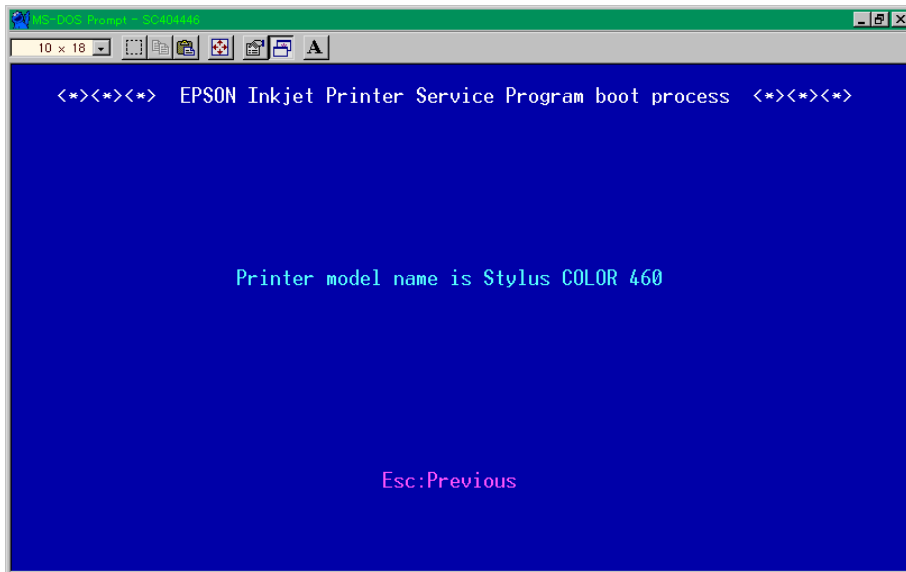


Figure 1-5. Initial Menu (5)